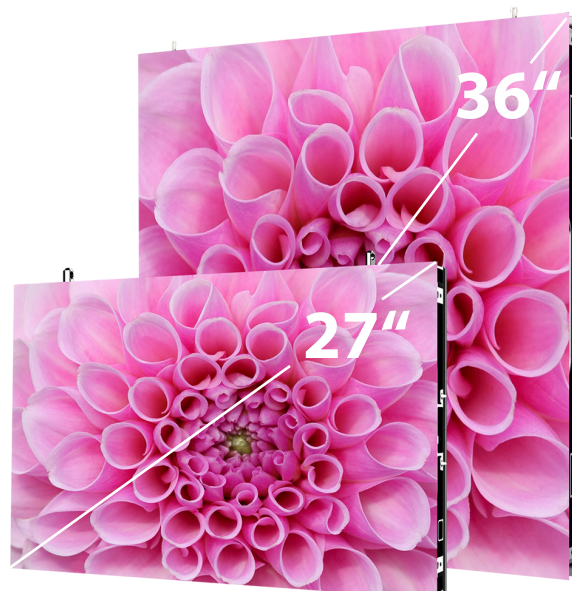




Planar DirectLight Pro Series

LED Video Wall Displays Made in Europe

- ▶ Customizable with 0.9, 1.2, 1.5, & 1.8mm pixel pitches
- ▶ Full front installation and serviceability
- ▶ 1000 nit Brightness
- ▶ Multiple cabinet sizes enable faster install
- ▶ Enables unique installs with tilting and up to 90° corners
- ▶ Multiple controller options including ColorLight; Planar WallDirector, and Brompton
- ▶ Made in Europe
- ▶ Complete 109", 137", 164", 198", & 219" sizes



Planar® DirectLight® Pro Series fine pixel pitch LED video walls deliver beautiful imagery to suit every indoor, fixed installation application. The front-service video walls feature models with high bandwidth, reducing deployment complexity and maximizing overall efficiency. For wider processing and feature flexibility the displays are compatible with the Planar® WallDirector™ Video Controller, Brompton Technology® and Colorlight.

 <p>27-in cabinet aspect ratio 16:9 36-in cabinet aspect ratio 8:9</p>	 <p>Designed for continuous operation</p>	 <p>Comes with Leyard Europe Evercare Limited Lifetime Warranty</p>	 <p>Full frontside installation and serviceability</p>	 <p>Made in Europe in our factory in Presov/Slovakia</p>
---	--	--	---	---

DirectLight Pro Complete LED Video Wall Packages

The Planar DirectLight Pro Complete™ Video Wall solution is available in convenient sizes and resolutions to reduce the time, complexity and cost of designing and installing a customized LED video wall. We've packaged everything an organization needs in one complete solution. Simply select the video wall size and resolution that best suits the environment and application, and receive the complete package, including the LED display cabinets, video controller, wall mounts, trims, cables and spare modules.

- Complete Direct View LED Video Wall ready to install
- 4K, Full HD, Dual-Full HD video walls in convenient diagonal sizes: 109", 137", 164", 198" and 219"
- Slim profile with full front installation and serviceability
- Leyard Europe Evercare Limited Lifetime Warranty





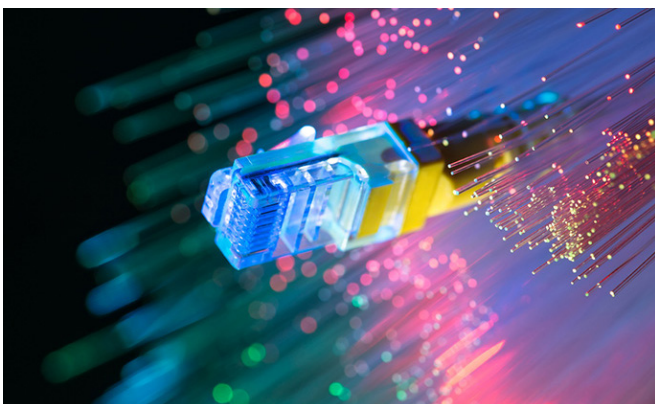
Engrained Efficiency

Video walls are comprised of both 27" and double-tall 36" LED cabinets. Fewer cabinets speed installation and maintenance, and lessens potential for visible seams.



Powerful Video Controller & Software

The compact Colorlight Controller drives the video wall at native resolution while its corresponding software simplifies setup and management. It captures multiple 4K inputs and supports HDR, ultra-low latency and genlock. Both 5G and fiber outputs are supported.



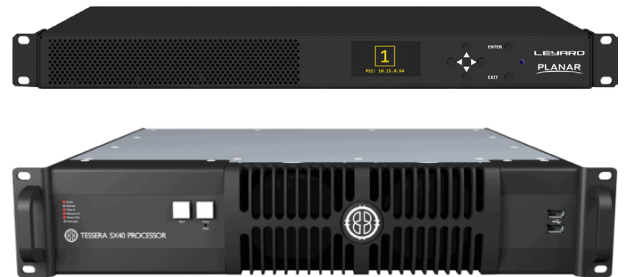
High Bandwidth

Most models offer 5x the bandwidth of competitive solutions, reducing total cost of ownership with fewer cabinets, cables and internal components like receivers and power supplies.



Lifetime Protection

Planar DirectLight Slim Series is protected by our EverCare™ Lifetime Limited Warranty which covers the whole display, everything from the sub-pixels to the video controller, for as long as it is used in a fixed location.



Controller Compatibility

Optionally, the new DirectLight Pro Series LED displays can also be equipped with the Planar® WallDirector™ Video Controller or the market-leading Brompton Technology LED video processors instead of the standard controller.



Turn the Corner

Display modules and cabinets have 45° beveled edges enabling video walls to wrap around 90° corners for unique installations, and opening the displays for use in more creative applications.

Configure a Video Wall

Planar DirectLight Pro Series video walls feature a modular design with display cabinets that stack like building blocks in any configuration. Create video walls with custom sizes, shapes, corners, curves and resolutions.

Full HD 1920 x 1080 **4K** 3840 x 2160 **8K** 7680 x 4320



Models	1 x 1	2 x 2	3 x 3	4 x 4	5 x 5	6 x 6	7 x 7	8 x 8	9 x 9	10 x 10	11 x 11	12 x 12
DLP0.9	640 x 360	1280 x 720	1920 x 1080	2560 x 1440	3200 x 1800	3840 x 2160	4480 x 2520	5120 x 2880	5760 x 3240	6400 x 3600	7040 x 3960	7680 x 4320
DLP1.2	480 x 270	960 x 540	1440 x 810	1920 x 1080	2400 x 1350	2880 x 1620	3360 x 1890	3840 x 2160	4320 x 2430	4800 x 2700	5280 x 2970	5760 x 3240
DLP1.5	384 x 216	768 x 432	1152 x 648	1536 x 864	1920 x 1080	2304 x 1296	2688 x 1512	3072 x 1728	3456 x 1944	3840 x 2160	4224 x 2376	4608 x 2592
DLP1.8	320 x 180	640 x 360	960 x 540	1280 x 720	1600 x 900	1920 x 1080	2240 x 1260	2560 x 1440	2880 x 1620	3200 x 1800	3520 x 1980	3840 x 2160

Video Wall Sizes												
Area	0.21sqm	0.82sqm	1.85sqm	3.29sqm	5.14sqm	7.41sqm	10.08sqm	13.17sqm	16.67sqm	20.58sqm	24.90sqm	29.63sqm
Diagonal	27" / 69cm	55" / 139cm	82" / 208cm	109" / 278cm	137" / 347cm	164" / 416cm	191" / 486cm	219" / 555cm	246" / 625cm	273" / 694cm	301" / 763cm	328" / 832cm
Meters/Feet	0.6 x 0.3m 2.0 x 1.1ft	1.2m x 0.7 4.0 x 2.2ft	1.8 x 1.0m 6.0 x 3.4ft	2.4 x 1.4m 7.9 x 4.5ft	3.0 x 1.7m 9.9 x 5.6ft	3.6 x 2.0m 11.9 x 6.7ft	4.2 x 2.4m 14.0 x 7.8ft	4.8 x 2.7m 15.9 x 8.9ft	5.4 x 3.1m 17.9 x 10.1ft	6.0 x 3.4m 19.8 x 11.2ft	6.7 x 3.7m 21.8 x 12.2ft	7.3 x 4.1m 23.8 x 13.4ft



Extended Ruggedness & Optics

Displays are available with Planar® ERO-LED™ (Extended Ruggedness and Optics™) protective coating that adds durability in high-traffic and interactive environments.



Enable Interactivity

Optimize video walls with a custom 32-point touch system and ERO-LED. The touch solution is not limited to a 16:9 aspect ratio, opening the door to more sizes and shapes.



Always-On Reliability

DirectLight Pro Series displays are designed for mission-critical environments in extended or continuous operation. Control rooms and other applications that can't afford downtime benefit from exceptional performance 24x7 and an optional redundant PSU option.



Low-Power Standby Mode

For maximum power savings and safety, we offer switched and metered PDUs as optional accessories. The controlled switch-off of the displays allows power cost and CO₂ savings and highest security for your IT and AV infrastructure.

Specifications

Cabinet Model	DLP 0.9	DLP 1.2	DLP 1.5	DLP 1.8
Pixel Pitch	0.945mm	1.26mm	1.575mm	1.89mm
Display Technology	Direct View LED			
Cabinet Resolution (W × H pixels)	27" - 640 × 360 36" - 640 × 720	27" - 480 × 270 36" - 480 × 540	27" - 384 × 216 36" - 384 × 432	27" - 320 × 180 36" - 320 × 360
Pixel Density	1,119,789/m² 10,4032/sq ft	629,882/m² 58,518/sq ft	403,124/m² 37,451/sq ft	279,947/m² 26,008/sq ft
Brightness Max, Calibration On	1,000 cd/m²			
Contrast Ratio	10,000:1			
Brightness Uniformity	≥97%			
Colour Uniformity	≥97%			
LED Refresh Rate	3,840 Hz			
Colour Temperature Range (k)	3,000 - 10,000			
Viewing Angle (50% Brightness)	>170° Horizontal; >140° Vertical			
Video Controller Size¹	1U rack-mounted controller, 19" rack			
Video Input Resolution, Max.¹	4096 × 2160 @ 60hz			
Frame Rate¹	50, 60hz			
Video Inputs¹	1× HDMI2.0, 1× DP1.2, 1× 12G-SDI (w/ HDCP 2.2)			
HDR Support	Yes			
Control	LAN / USB / RS232 control			
Installation & Service Access	Front, tool supplied, module locking feature			
Runtime Duty Cycle (Hours/Day)	24 × 7			
LED Lifetime, Typical	100,000 hrs			
Line Voltage	100-240V AC, 50/60hz			
Power Consumption, Maximum	27" - 135 W 36" - 270 W (656 W/m²)	27" - 135 W 36" - 270 W (656 W/m²)	27" - 135 W 36" - 270 W (656 W/m²)	27" - 135 W 36" - 270 W (656 W/m²)
Power Consumption, 50% brightness intensity	27" - 87 W 36" - 172 W	27" - 85 W 36" - 170 W	27" - 80 W 36" - 160 W	27" - 75 W 36" - 150 W
Cabinet Size (W x H x D)	27" - 604.8 × 340.2 × 64.5mm 36" - 604.8 × 680.4 × 64.5mm			
Weight (Cabinet)	27" - 6.94kg (15.3lbs) 36" - 13.2kg (29.1lbs)			
Installation & Service Access	Front Access, module removal. All internal electronics accessible.			
Supported Installation Types	Standard Flat Wall Forward Tilt: up to 10° 90° exterior corners Concave faceted curve			
Controller Compatibility	Standard: Colorlight Optional: Brompton & Planar WallDirector Video Controller			
Redundant PSU Option	Yes			
Storage Temperature/Humidity	-40° to 60° C (-40° to 140° F) / 10-85% relative humidity, non-condensing			
Operating Temperature/Humidity	-20° to 40° C (-4° to 104° F) / 10-80% relative humidity, non-condensing			
Regulatory Compliance	NRTL UL 60950-1 TUV Rheinland, FCC Class A, CE EN60950-1, EN 55032 Class A and EN55024, WEEE, CISPR 32/2015			
Warranty	Leyard Europe EverCare Lifetime Limited Warranty (LE Sales Territories)			

¹ with standard controller, may vary with other controller options)

Complete Model	HD109	HD137	HD164	DHD198	UHD164	UHD219
Display Resolution	1920 x 1080			3840 x 1080	3840 x 2160	
Display Size (Diagonal)	109in	137in	164in	198in	164in	219in
Display Size (W x H)	2419 x 1361mm 7.9ft x 4.5ft	3024 x 1701mm 9.9ft x 5.6ft	3629 x 2041mm 11.9ft x 6.7ft	4839 x 1361mm 15.9ft x 4.5ft	3629 x 2041mm 11.9ft x 6.7ft	4839 x 2722mm 15.9ft x 8.9ft
Pixel Pitch	1.26mm	1.575mm	1.89mm	1.26mm	0.9mm	1.26mm
Power Consumption, Maximum	2,230 watts	3,445 watts	4,930 watts	4,390 watts	4,930 watts	8,710 watts
Display Weight	112kg 247lbs	176kg 388lbs	249kg 547lbs	222kg 489lbs	255kg 561lbs	439kg 965lbs
Warranty	Leyard Europe EverCare Lifetime Limited Warranty (LE Sales Territories)					
Package Includes	Display wall, Video Controller, Signal cables, Power cables, Wall mount, Trim, and Module Spares (may vary by region)					