

BarnColor

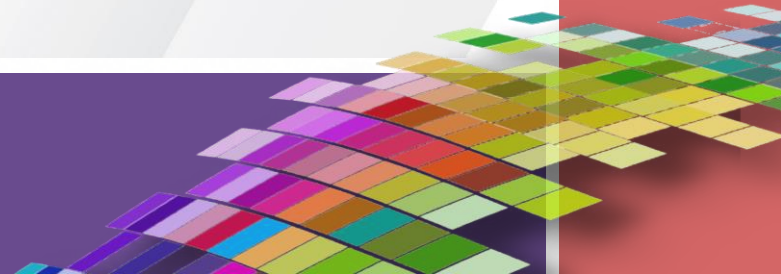
NEW RELEASE



BarnColor

Why BarnColor?

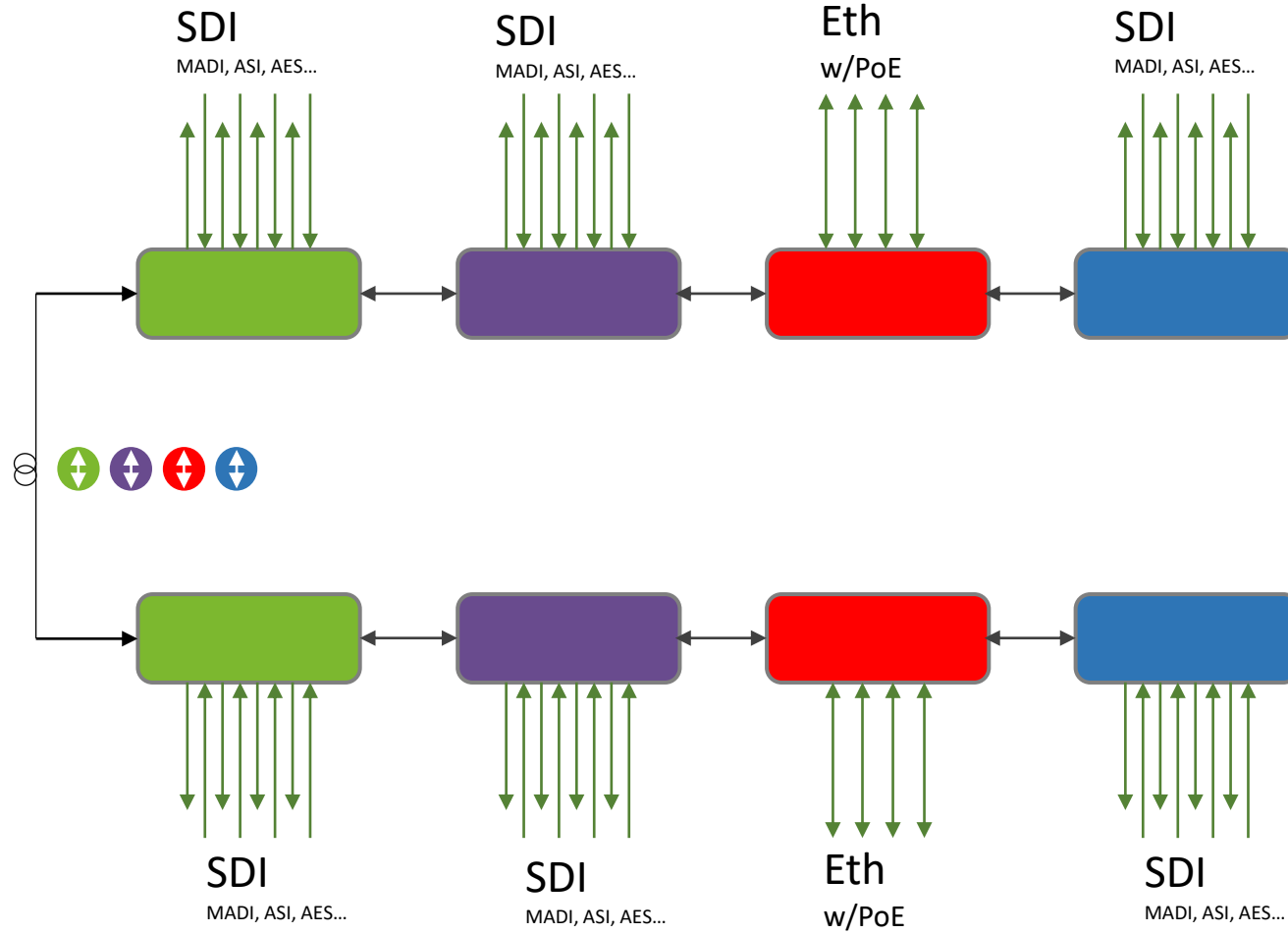
- Cost effective solution
- Easy to use (no technical skills required)
- No configuration or setup procedures
- Scalable, upgrade at later stage
- Small form factor, or 19 inch (1RU)



BarnColor

The Concept

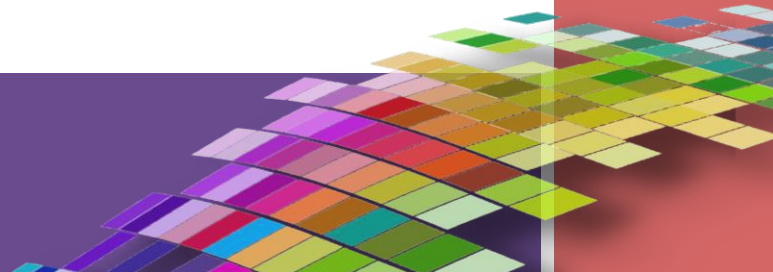
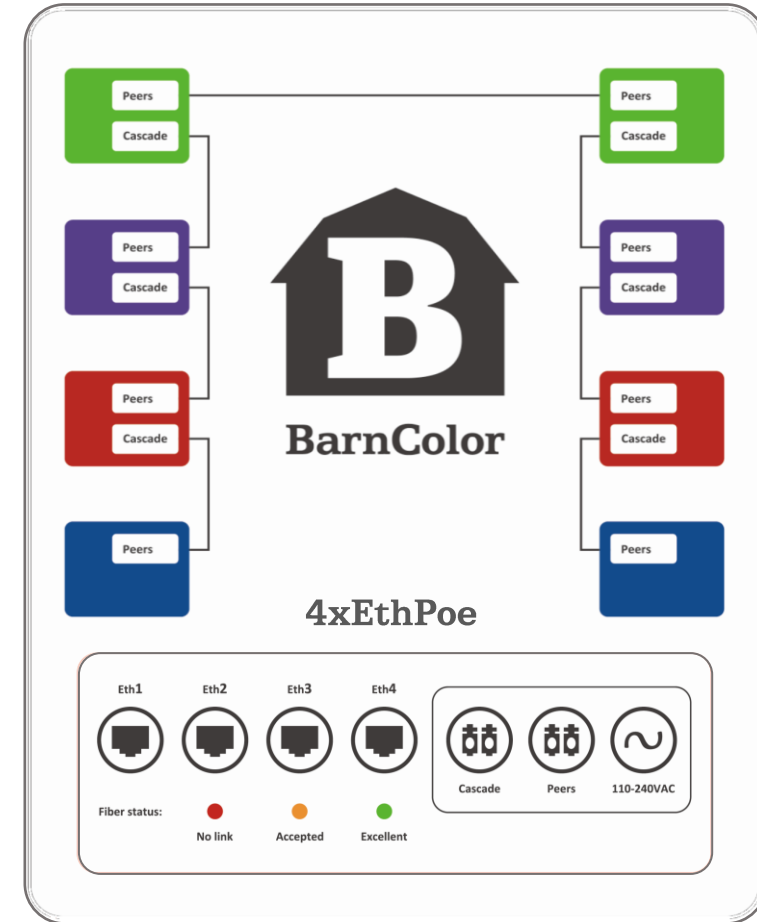
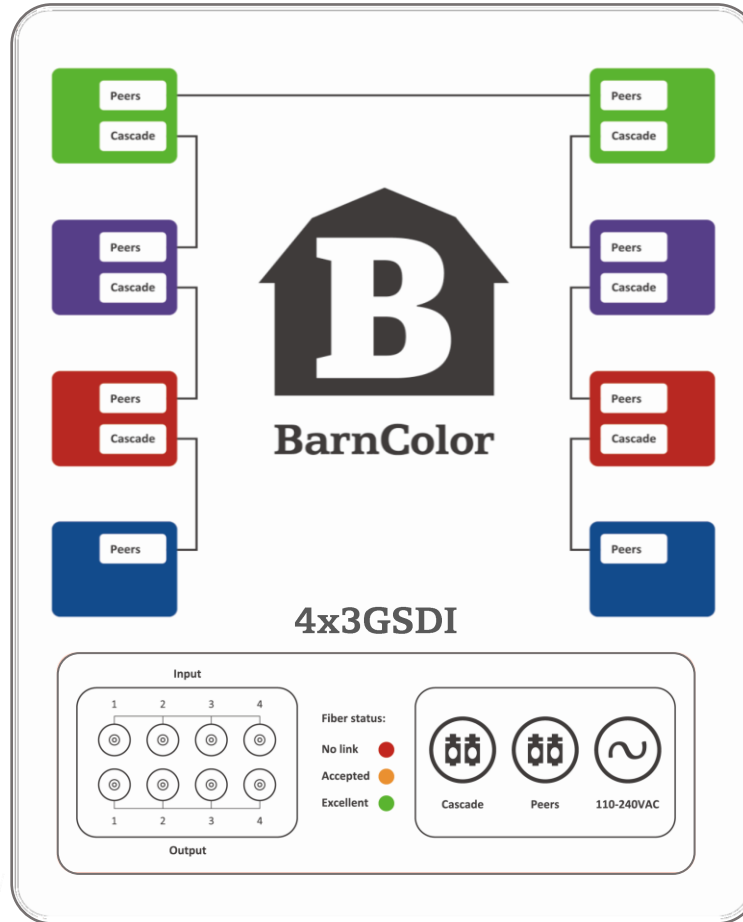
- Each BarnColor unit is available as SDI or Ethernet version
- Can cascade maximum 4 boxes (colors) on each side.
- Boxes can be combined in any variation as long as color is different
- Maximum transmission distance – medium range
- Rugged connectors



BarnColor

The Top Cover

- Connection diagram for cascade connection
- Front panel overview:
 - Connectors
 - LED
 - Optical connectors
 - Power connector



The Front Panel

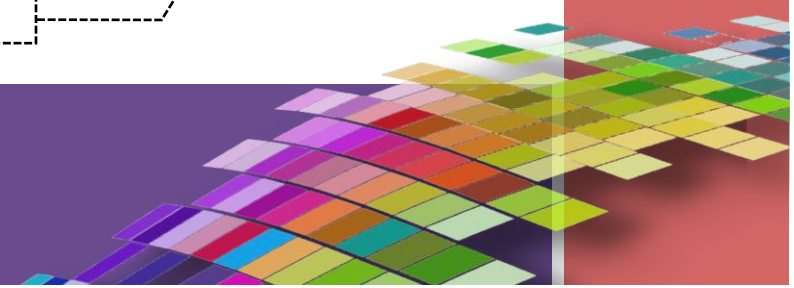
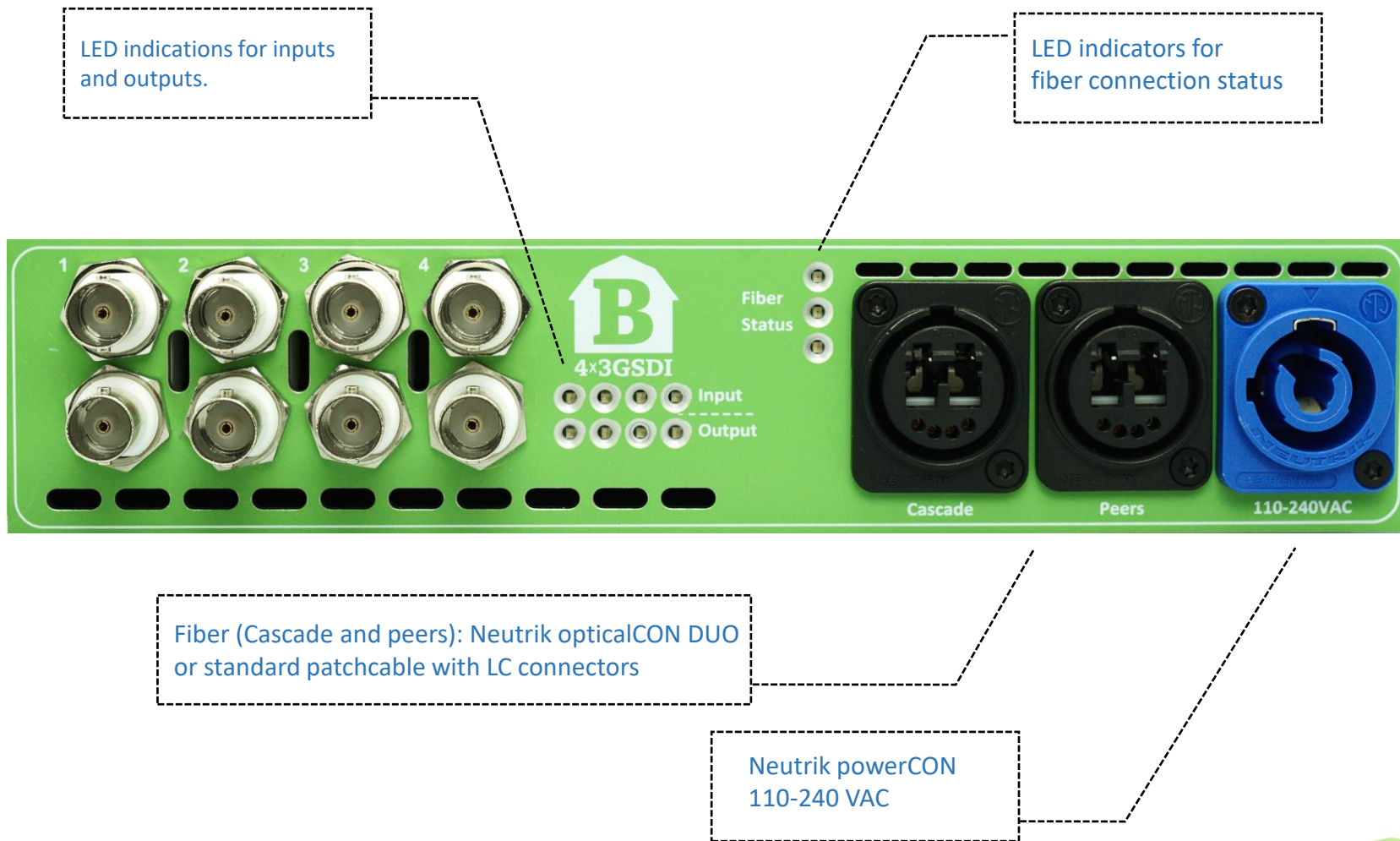
LED indications for inputs and outputs.

LED indications for fiber connection status.

- No link
- Accepted
- Excellent

Connections:

- Fiber (Cascade and peers): Neutrik opticalCON DUO or standard patchcable with LC connectors
- Power: Neutrik powerCON 110-240 VAC



BarnColor

Optional Rack Mounting Brackets

- Brackets for interlocking of 2 units (Included)
- Brackets for 19" rack mounting (included)



Interlocking Brackets



Rack Ear



2 units interlocked. Ready for rack mounting



Detailed Funtionality Diagram

